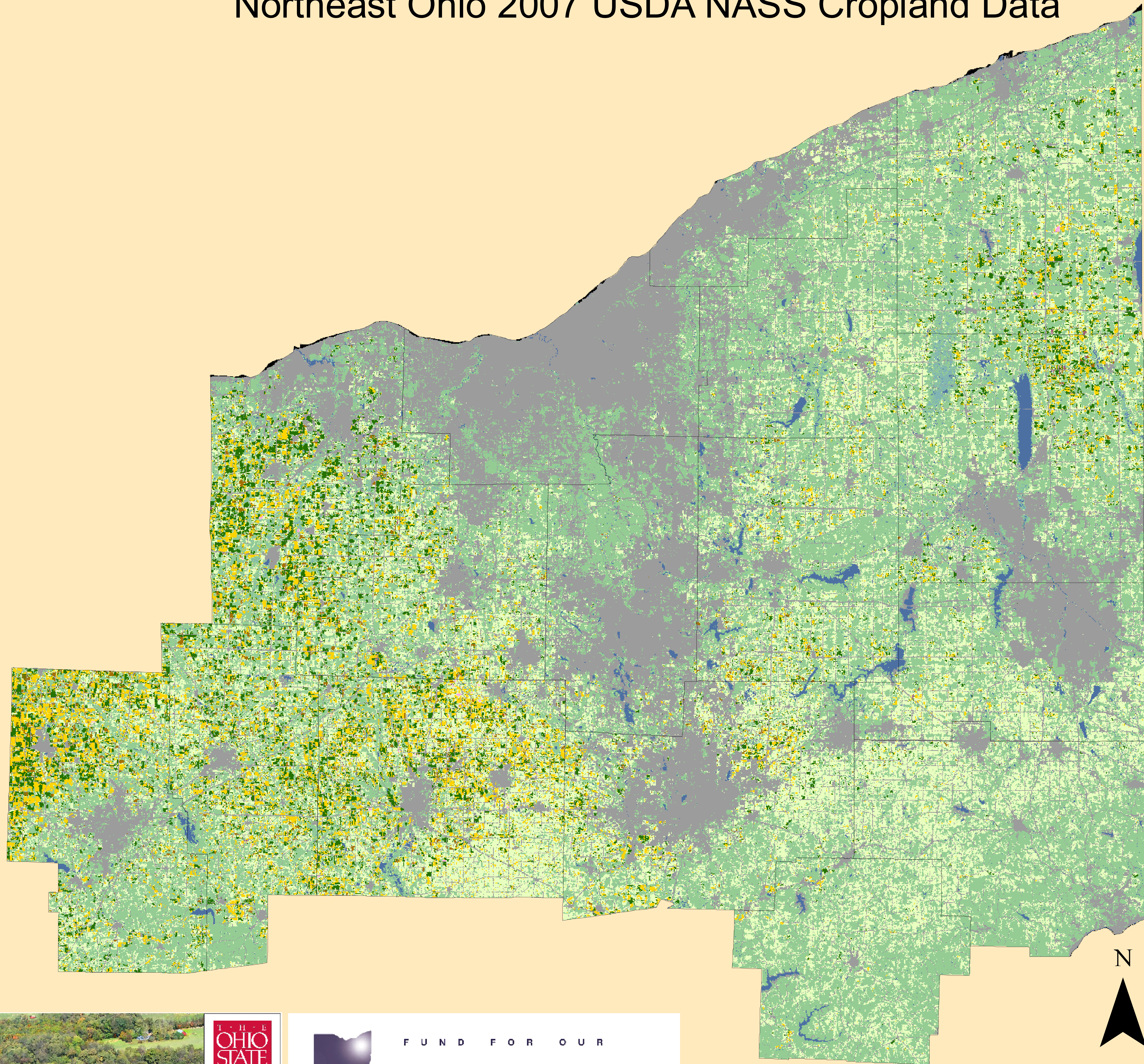


Northeast Ohio 2007 USDA NASS Cropland Data



- Alfalfa
- Background
- Barley
- Clover/Wildflowers
- Corn
- Fallow/Idle Cropland
- Grapes
- Grass/Pasture/Non-Ag
- Misc. Veggies. & Fruits
- NLCD - Barren
- NLCD - Deciduous Forest
- NLCD - Developed/High Intensity
- NLCD - Developed/Low Intensity
- NLCD - Developed/Medium Intensity
- NLCD - Developed/Open Space
- NLCD - Evergreen Forest
- NLCD - Grassland Herbaceous
- NLCD - Herbaceous Wetlands
- NLCD - Mixed Forest
- NLCD - Open Water
- NLCD - Pasture/Hay
- NLCD - Shrubland
- NLCD - Woody Wetlands
- Oats
- Other Crops
- Potatoes
- Rye
- Soybeans
- Speltz
- Sunflowers
- Wetlands
- Win. Wht./Soyb. Dbl. Cropped
- Winter Wheat
- Woodland

2007 Cropland Data

The 2007 Cropland Data Layer (CDL) was created for the entire corn belt region of the US by the USDA National Agricultural Statistics Service. The CDL is produced from satellite imagery collected during the growing season, at about 90% overall accuracy. The CDL provides insight into the current patterns of crop production in NE Ohio.

This map was produced by the Agroecosystems Management Program of the Ohio Agricultural Research and Development Center and Ohio State University Extension, with partnership and funding from the Fund for Our Economic Future.

